

COMPREHENSIVE PLAN FOR ADAMS TOWNSHIP CAMBRIA COUNTY, PENNSYLVANIA

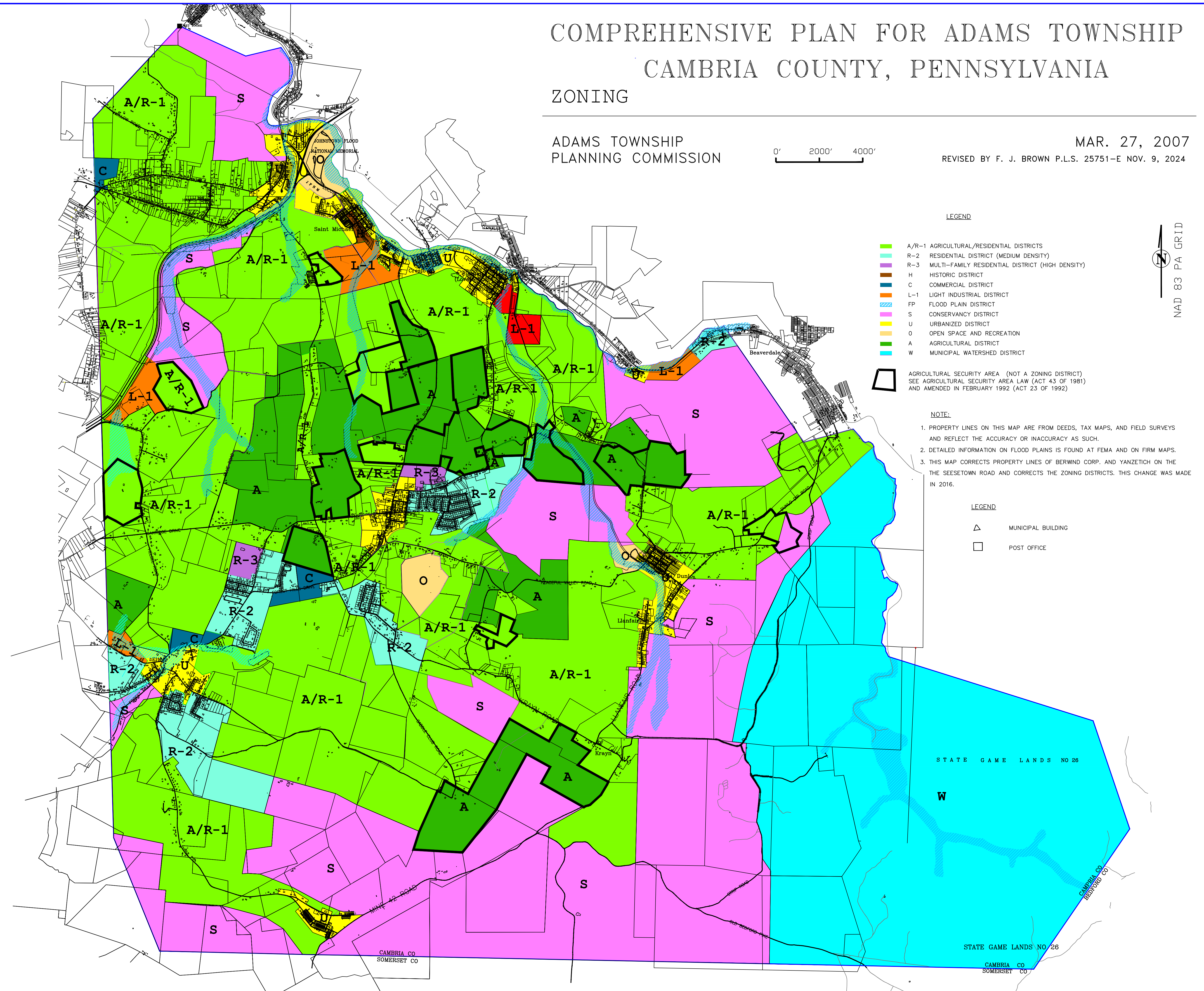
ZONING

ADAMS TOWNSHIP
PLANNING COMMISSION



MAR. 27, 2007

REVISED BY F. J. BROWN P.L.S. 25751-E NOV. 9, 2024



LEGEND

- A/R-1 AGRICULTURAL/RESIDENTIAL DISTRICTS
- R-2 RESIDENTIAL DISTRICT (MEDIUM DENSITY)
- R-3 MULTI-FAMILY RESIDENTIAL DISTRICT (HIGH DENSITY)
- H HISTORIC DISTRICT
- C COMMERCIAL DISTRICT
- L-1 LIGHT INDUSTRIAL DISTRICT
- FP FLOOD PLAIN DISTRICT
- S CONSERVANCY DISTRICT
- U URBANIZED DISTRICT
- O OPEN SPACE AND RECREATION
- A AGRICULTURAL DISTRICT
- W MUNICIPAL WATERSHED DISTRICT

AGRICULTURAL SECURITY AREA (NOT A ZONING DISTRICT)
SEE AGRICULTURAL SECURITY AREA LAW (ACT 43 OF 1981)
AND AMENDED IN FEBRUARY 1992 (ACT 23 OF 1992)

NOTE:

1. PROPERTY LINES ON THIS MAP ARE FROM DEEDS, TAX MAPS, AND FIELD SURVEYS AND REFLECT THE ACCURACY OR INACCURACY AS SUCH.
2. DETAILED INFORMATION ON FLOOD PLAINS IS FOUND AT FEMA AND ON FIRM MAPS.
3. THIS MAP CORRECTS PROPERTY LINES OF BERWIND CORP. AND YANZETICH ON THE THE SEESTOWN ROAD AND CORRECTS THE ZONING DISTRICTS. THIS CHANGE WAS MADE IN 2016.

LEGEND

- ▲ MUNICIPAL BUILDING
- POST OFFICE

NAD 83 PA GRID

STATE GAME LANDS NO 26

W

STATE GAME LANDS NO 26

CAMBRIA CO
SOMERSET CO